

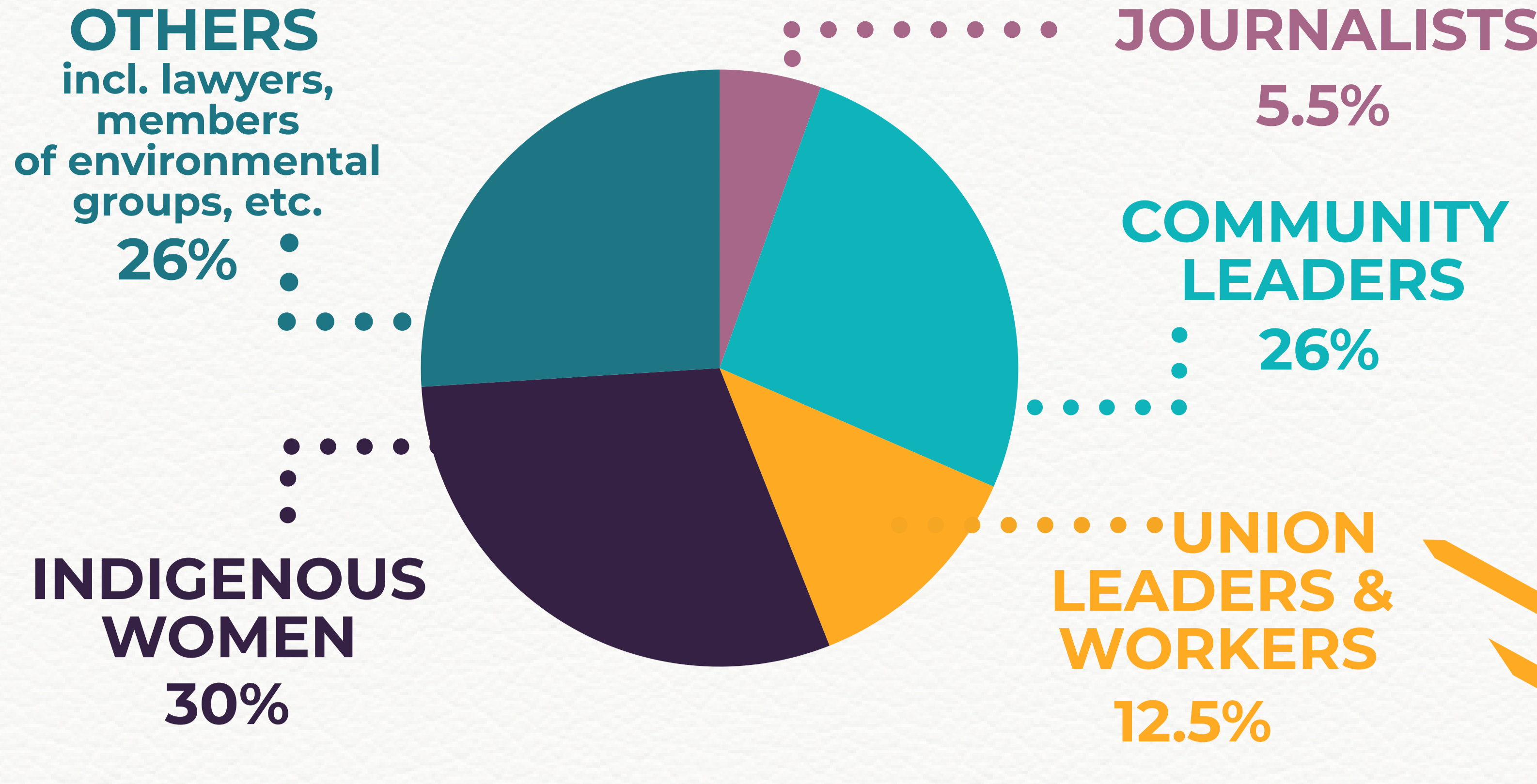
WOMEN Human Rights Defenders - WHRDs

working on business-related issues
(data from 2015-2018)

8th MARCH 2019

Women and girls are at the forefront of protecting our water, land, environment and workers' labour rights, and yet are increasingly under attack. They are attacked because of who they are and because of what they do – challenging power and traditional gender roles.

Which WHRDs are most at risk?



Women defenders face the same attacks as men, as well as different types of threats and violence due to their gender.

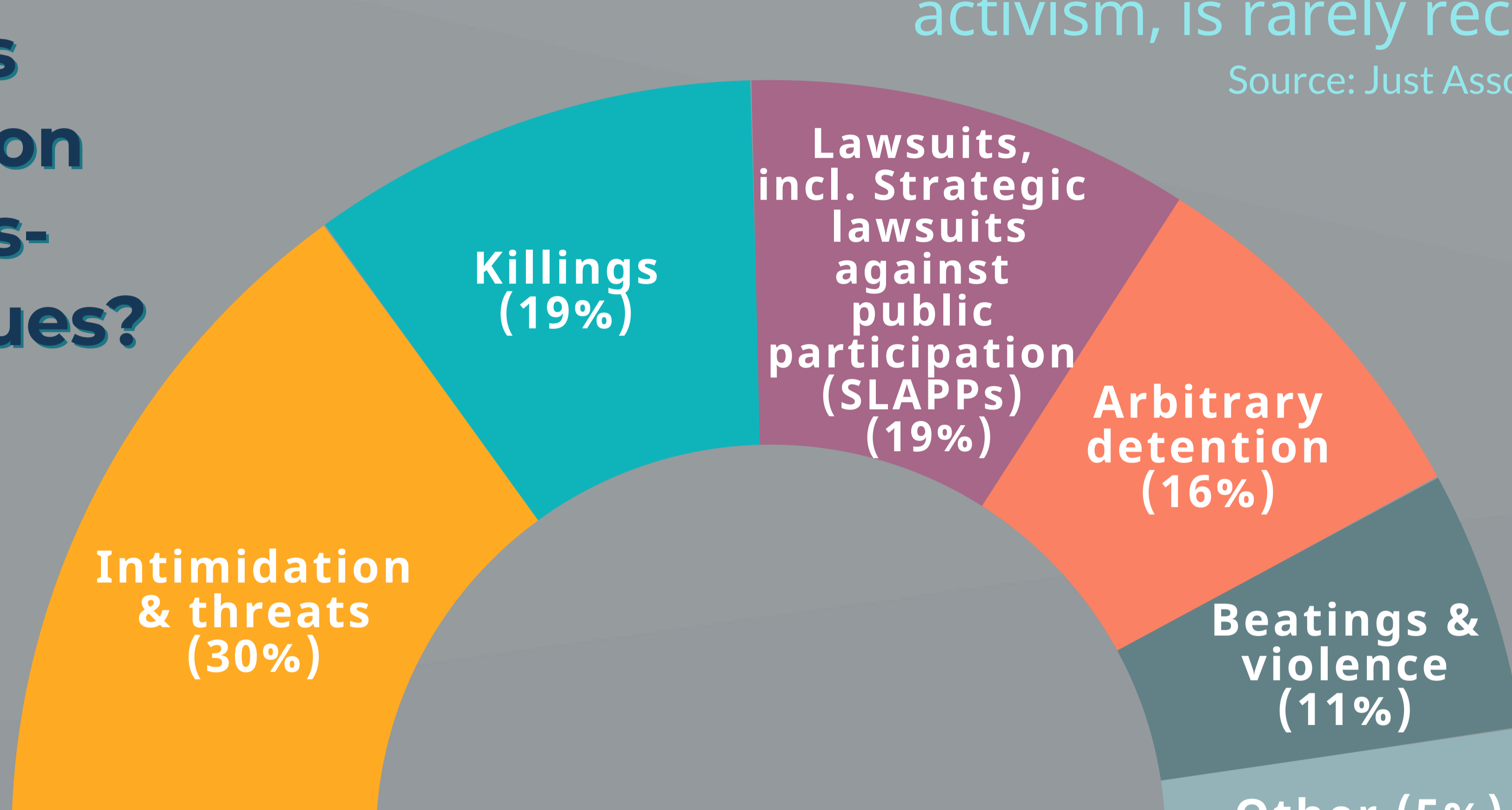
This includes attacks on their honour and reputation, public shaming, sexual violence, and threats against their children and loved ones.

Source: SR on HRDs' report on WHRDs, 2019

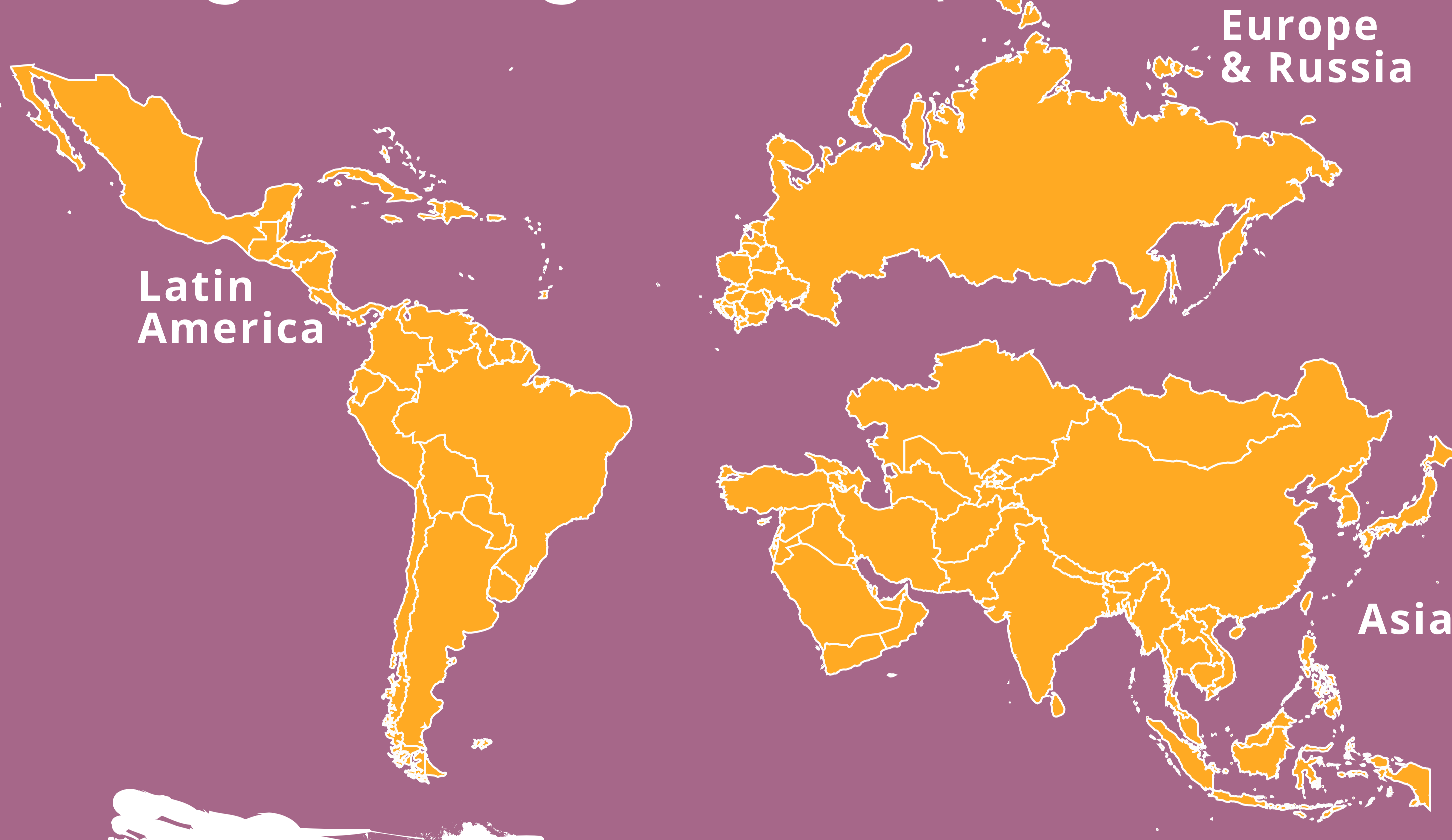
What are the most common types of attacks on WHRDs working on business-related issues?

The triple impact of the physical and emotional burden of domestic and community care work on women, in addition to their activism, is rarely recognized.

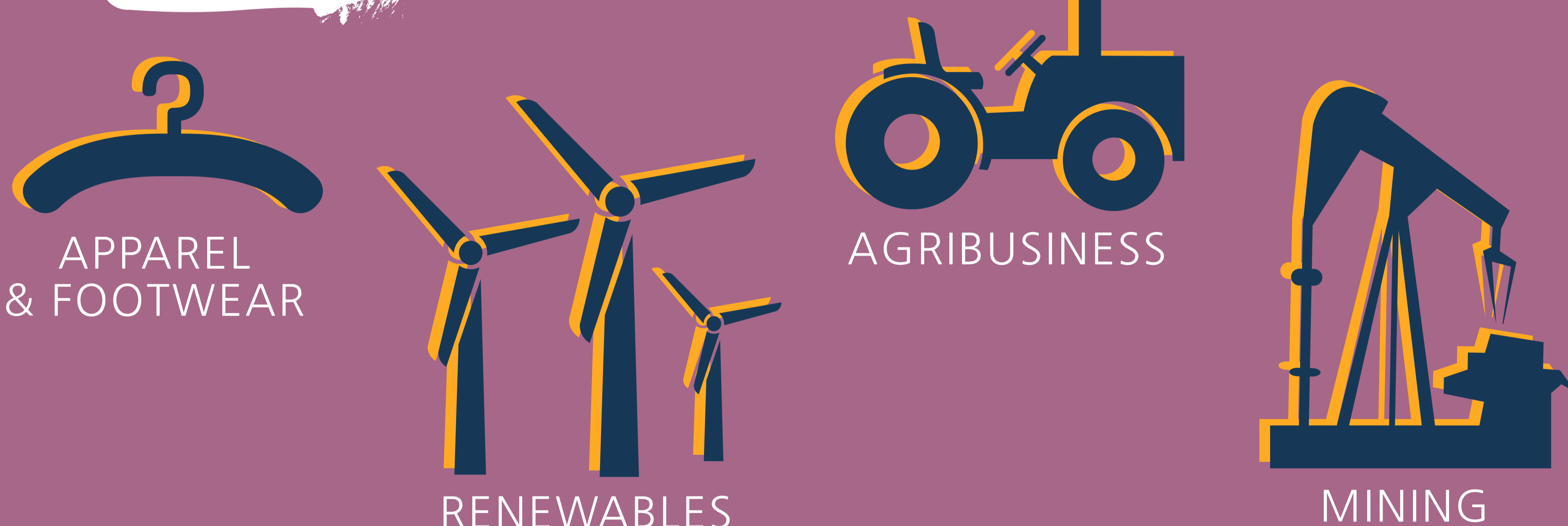
Source: Just Associates, 2019



Which are the most dangerous regions?



Which sectors?

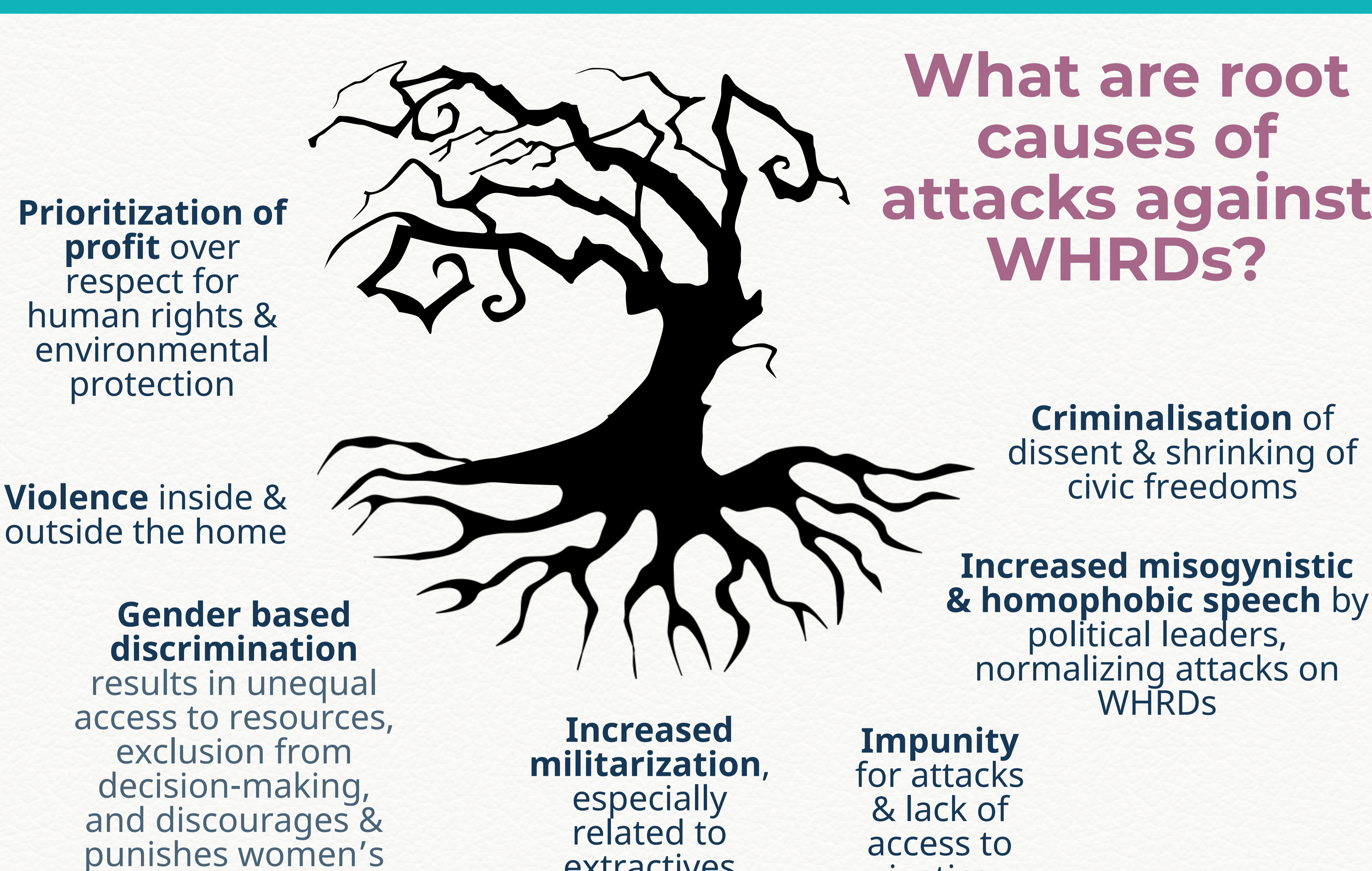


Who is involved?

COMPANIES directly & indirectly +



What are root causes of attacks against WHRDs?



Businesses can entrench or worsen many of these root causes of attacks if they don't actively work to advance gender equality.

Shrinking civic freedoms are a growing concern around the world. But freedoms in communities and in families were always 'shrunk' for women, who had to fight to claim these spaces. Therefore the attacks on WHRDs are also an attack on the progress women have made and push women back to prescribed gendered roles, spaces and opportunities.

"It will not be true if I say I am not afraid. Because I am. But there are things I need to do for my people. And so I continue, and move on."

— Josephine Pagalan,
"In Our Bones" report, Urgent Action Fund

Josephine has received death threats after campaigning against mining and logging companies in Mindanao, Philippines

WHRDs